

# User's Manual for the Boundary Devices Neon<sup>®</sup> board

*August 9, 2005*



## 1 Revision History

<b>Date</b>	<b>Revision</b>	<b>Description</b>
2005-03-20	1.0	First draft
2005-04-03	1.3	Added minidebug instructions
2005-06-11	2.0	Added display config, networking notes
2005-06-27	2.1	Added connector pin-outs (Figure 2)
2005-07-23	2.2	Updated U-Boot version
2005-08-09	2.3	Added notes on mac address command

## Contents

<b>1</b>	<b>Revision History</b>	<b>2</b>
<b>2</b>	<b>Intended Audience</b>	<b>4</b>
<b>3</b>	<b>Overview of features</b>	<b>4</b>
<b>4</b>	<b>Hardware feature</b>	<b>4</b>
4.1	Layout . . . . .	4
4.2	Mounting . . . . .	5
4.3	Connector reference . . . . .	5
4.4	Electrical characteristics . . . . .	7
<b>5</b>	<b>Software features</b>	<b>8</b>
5.1	<a href="#">Das U-Boot</a> . . . . .	8
5.1.1	Requirements for building under Linux . . . . .	8
5.1.2	Requirements for building under Windows with <a href="#">Cygwin</a> . . . . .	8
5.1.3	General build steps . . . . .	9
5.1.4	Tailoring U-Boot for your application . . . . .	9
5.1.5	U-Boot Memory layout . . . . .	11
5.1.6	U-Boot Init Script . . . . .	12
5.2	Windows CE . . . . .	13
5.2.1	Prerequisites and components . . . . .	13
5.2.2	BSP Installation . . . . .	13
5.2.3	Building the demo . . . . .	14
5.3	Linux Support . . . . .	15
5.3.1	Toolchain . . . . .	15
5.3.2	Crosstool Linux Toolchain . . . . .	15
5.3.3	Crosstool Embedded ( <a href="#">Das U-Boot</a> ) Toolchain . . . . .	17
5.3.4	<a href="#">GNUARM</a> binaries . . . . .	18
5.3.5	Kernel . . . . .	18
5.3.6	Libraries and Applications . . . . .	18
<b>6</b>	<b>Development Tools</b>	<b>19</b>
6.1	minidebug . . . . .	19
6.1.1	mdebug . . . . .	20
6.2	JTAG system-level debugger . . . . .	20
6.2.1	Requirements . . . . .	21
6.2.2	Startup Options . . . . .	21
6.2.3	Control Keys . . . . .	23
6.2.4	Blast protocol . . . . .	23
6.2.5	Quick-start download and burn . . . . .	23
6.3	TeraTerm blast extensions . . . . .	25
6.4	Using U-Boot Networking . . . . .	26

---

<b>7</b>	<b>Configuration Notes</b>	<b>27</b>
7.1	Display configuration . . . . .	27
7.1.1	What display is currently selected? . . . . .	28
7.1.2	What displays are supported...? . . . . .	29
7.1.3	Select a supported display . . . . .	31
7.1.4	Define and test a new display . . . . .	32
7.1.5	Saving settings to Flash EEPROM . . . . .	33
7.2	Memory size configuration . . . . .	33
7.3	Upgrading U-Boot . . . . .	34
7.4	Touch Panel Calibration . . . . .	35
7.5	Ethernet MAC Addresses . . . . .	36

## 2 Intended Audience

This document aims to provide the information needed to integrate the Neon<sup>®</sup> board into your application. As such, it addresses both hardware and software integration.

## 3 Overview of features

The following are highlights of the Neon<sup>®</sup> board.

- Available with Windows Ce or Linux Operating Systems
- Full featured [Boot Loader](#) for custom startup
- 400 MHz Intel PXA-255 CPU
- 32 or 64MB SDRAM
- 8 or 32MB Intel StrataFlash (tm) EEPROM
- [Silicon Motion SM 501](#) Graphics Controller
- Active Matrix LCD Support,
- Including Full-Motion Video
- STN Passive LCD Display Support
- 4 or 5-Wire Resistive Touch-Screen Support
- 44KHz Stereo 16-Bit Audio Output, for Headphones or Speakers
- 44KHz Monaural Audio Input (microphone)
- 1 RS-232 or TTL Serial Port
- 1 USB 1.1 Slave Port
- 1 USB 1.1 Master Port
- Built-in 10/100 Ethernet Controller,
- Built-in Interface for Magnetic Stripe Readers and Printers
- MMC Slot for Expanded Storage
- General Purpose I/O for Device Control
- Built-in Switching Power Supply for 5V DC Input
- JTAG Interface
- Customized Versions Available

## 4 Hardware feature

### 4.1 Layout

As shown in Figure 1, the Neon<sup>®</sup> board contains a wide variety of I/O options for use in your application. Note that some of these may not be populated on an evaluation or production board.

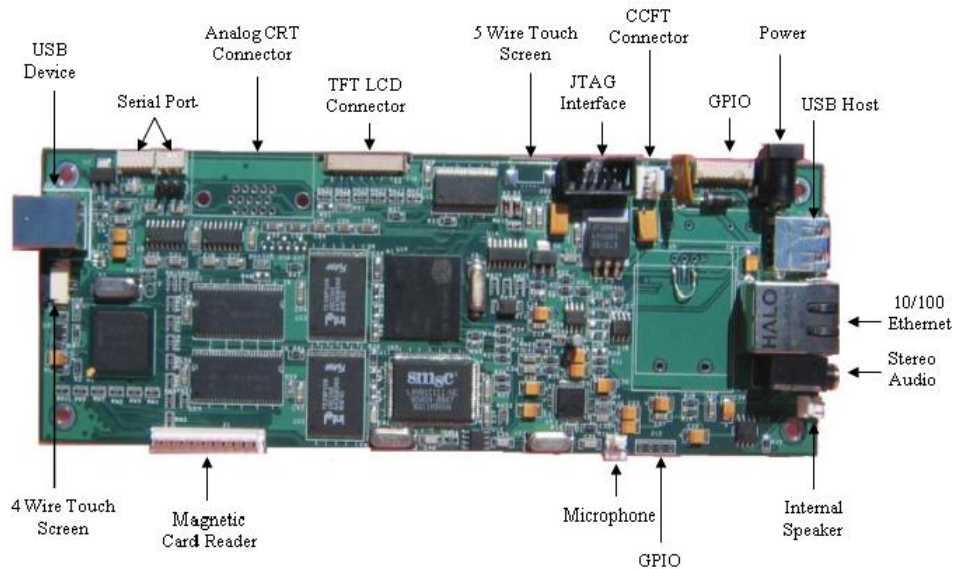


Figure 1: Neon board

## 4.2 Mounting

The Neon® board measures 2.75" by 6.75", slightly larger than the Hitachi® 6.2" display, to allow for easy mounting.

There are four mounting holes 1/4" from each edge in each of the four corners, and the holes are 1/8" in diameter.

## 4.3 Connector reference

The following is a list of all connector part numbers used on the Neon® platform for use in identifying mating parts for your application. Note that Boundary Devices will periodically switch vendors for these parts, but will notify you of any changes that require a new mating part.

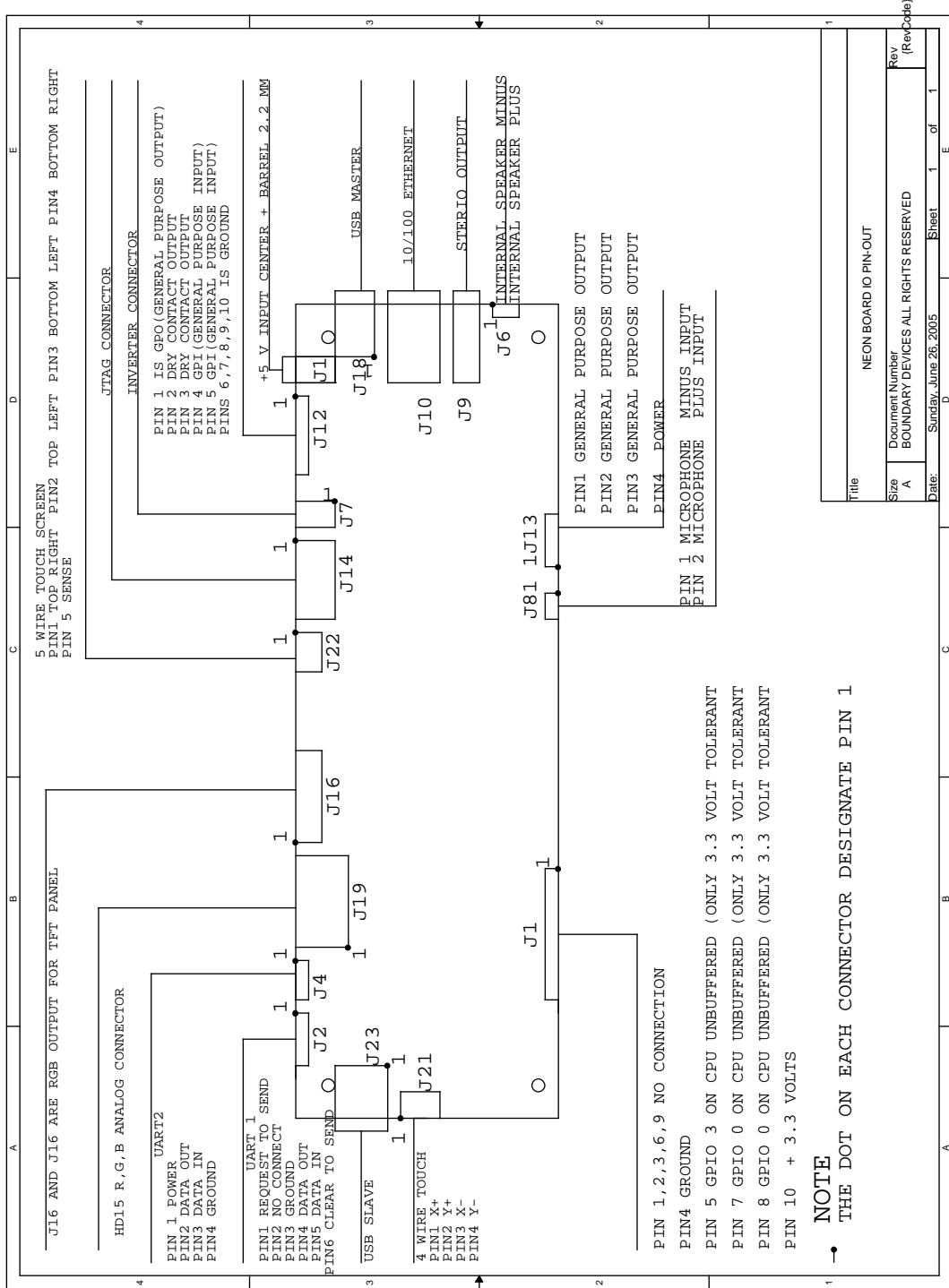


Figure 2: Connector Pin-outs

---

<b>Description</b>	<b>Manufacturer</b>	<b>Part</b>
USB Master	FCI	87520-0010B
USB Slave	SINGATRON	KS-001-BNW
I2C	FCI	68897-001
Ethernet	Halo	HFJ11-2450E
Stereo Audio	Singatron	2SJ-43723N13
Backlight inverter	Molex	53048-0210
MMC/SD	AVX	14 5638 009 511 862
TFT Display		
Touch Screen	Molex	52207-0590
Serial Port	FCI	68897-001
JTAG	Molex	53048-0810

#### 4.4 Electrical characteristics

## 5 Software features

As provided by Boundary Devices, the Neon<sup>®</sup> board supports either Windows CE 5<sup>®</sup> or Linux.

To simplify the installation of either, the [Das U-Boot](#) boot loader is installed on our evaluation boards, and two MMC cards are shipped to allow the use of either operating system.

### 5.1 [Das U-Boot](#)

The [Das U-Boot](#) Boot Loader is a full-featured loader for either Linux or Windows CE that supports a wide variety of options for loading your Operating System and application.

Boundary Devices ships U-Boot both as a binary image and as source code in the form of a patch that adds support for either Neon or BD-2003 devices.

The binary image may be burned directly to sector zero of the on-board flash.

The source code will require a set of Linux or [Cygwin](#)(Windows) tools for cross-compilation. The following section will detail the requirements and steps for building.

#### 5.1.1 Requirements for building under Linux

Since the [Das U-Boot](#) project uses GNU tools, most of the required components will generally be available on a GNU/Linux system.

The three pieces which may not commonly be installed are the [bzip2](#) and [wget](#) packages and an ARM cross compiler.

Boundary Devices typically uses GCC-2.95.3 to create U-Boot images, since that matches what we use to build the Linux image to run on the Neon itself, but the binary distribution of GCC-3.4.3 from [GNUARM](#) is a nice alternative.

#### 5.1.2 Requirements for building under Windows with [Cygwin](#)

There are two primary requirements for building under Windows.

The first, [Cygwin](#), provides a set of Unix utilities under the Windows operating system. Since the Cygwin installer allows components to be selected individually, the following list shows the requirements for building a [Das U-Boot](#) image with Neon<sup>®</sup> support. Note that this list is probably incomplete, but these should be the only required items which differ from the Cygwin installation defaults.

Base/diffutils  
Devel/binutils  
Devel/gcc  
Devel/make  
Devel/patchutils  
Utils/bzip2  
Web/wget

The second requirement for building is the X-Scale cross-compiler itself. The [GNUARM](#) project provides a wealth of information needed to build a cross-compiler for ARM processors. Thankfully, it also provides an [installer](#). As of this writing, Boundary Devices currently uses the GCC-3.4.3 package for [Cygwin](#).

### 5.1.3 General build steps

Quick start:

```
wget http://easynews.dl.sourceforge.net/sourceforge/u-boot/u-boot-1.1.2.tar.bz2
bzip2 u-boot-1.1.2.tar.bz2 | tar -xvf -
wget http://boundarydevices.com/u-boot-2005-07-23.patch.gz
gunzip u-boot-2005-07-23.patch.gz
patch -p0 <u-boot-2005-07-23.patch
cd u-boot-1.1.2
CROSS_COMPILE=arm-elf- make neon_config
----- U-Boot Boundary Devices Specific Configuration Script -----
Choose display type (DA640X240 DA320X240 DA800X480 DA640X480 DA240X320 DA1024X768) []: DA1024X768
answer
Choose hardware type (NEONB NEON BD2003) [NEON]:
answer
Choose software type (WINCE LINUX) []: WINCE
answer
Include minidebug (y n) []: y
answer
CPU speed (100 200 300 400) []: 400
answer
Configuration successful.
make
```

Explanation.

The first four lines retrieve and extract the [Das U-Boot](#) sources and add support for the Neon<sup>®</sup> and BD-2003 devices.

The last two lines configure for the Neon<sup>®</sup> board itself, and finally, build a U-Boot binary. The prompts allow you to select the compile-time defaults for the display, operating system, and CPU speed. Including minidebug in your U-Boot image allows you to access the debugger while developing U-Boot scripts.

When complete, you'll find a file named `u-boot.bin` in your `u-boot-1.1.2` directory.

### 5.1.4 Tailoring U-Boot for your application

The Boundary Devices patches (`uboot_neon_bd2003.diff`) make a variety of decisions about the boot process which may not match with the needs of

your application.

In general, the file `u-boot-1.1.2/include/configs/neon.h` defines these choices.

In particular, the distributed copy currently expects a Windows BMP file named `bdlogo.bmp` to be present on the MMC card and writes it to the display, then loads an operating system image from a file named `nk.nb0` to RAM address `0xa0030000` and executes it.

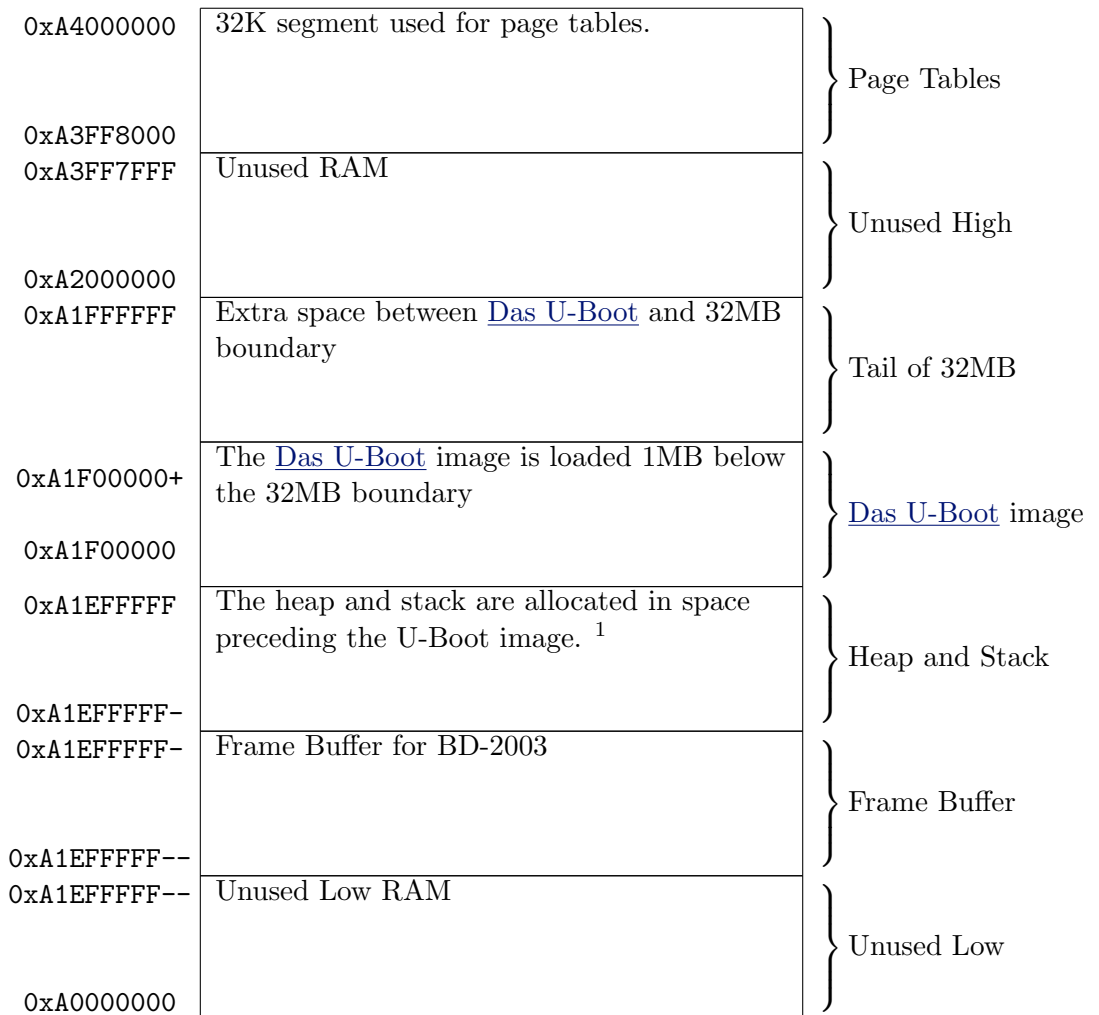
Both of these are defined by the lines which resemble this:

```
#define CONFIG_BOOTCOMMAND      "mmcinit; " \
                                "fatload mmc 0 a0000000 init.scr ; " \
                                "autoscr a0000000 ; "
```

As mentioned previously, the [Das U-Boot](#) Boot Loader is a very capable loader with support for USB and network boot, including BOOTP/DHCP, and NFS mounting support. Please refer to the [Das U-Boot](#) website for details.

### 5.1.5 U-Boot Memory layout

The following diagram shows the general layout of RAM within [Das U-Boot](#).



### 5.1.6 U-Boot Init Script

The [Das U-Boot](#) boot loader comes with scripting facilities in the form of the Hush parser and the autoscript command. You should notice when first compiling the package that the Boundary Devices sample uses this to defer most board initialization to the MMC card. It does this by setting the `CONFIG_BOOTCOMMAND` environment variable as follows.

```
#define CONFIG_BOOTCOMMAND      "mmcinit; fatload mmc 0 a0000000 init.scr ; autoscr a0000000 "
```

In English, this instructs U-Boot to initialize the MMC/SD card driver, load a file named `init.scr` from the card to address `A0000000` (the start of RAM), and execute the script from that memory address. This little bit of scripting effectively passes all responsibility of what to do at boot time to the MMC card.

Think of it as a [Das U-Boot](#) version of `AUTOEXEC.BAT`.

The sample script is defined in `u-boot-1.1.2/board/neon/init.script` and performs the following steps.

1. **Loads and displays a logo.** The script looks for an image file named `logo.bmp` on the MMC/SD card. If found, it displays the logo on the LCD panel. We recommend that you place a splash image of a size matching your display on the MMC card. Note that the bitmap must be an 8-bit color bitmap.
2. **Loads and runs Windows CE.** Next, the script attempts to load `NK.nb0` from the MMC/SD card and run it.

As mentioned earlier, the initialization has been mostly deferred to the MMC/SD card, so the compiled script (`init.scr`) must be placed on the card itself. The script is compiled using the [Das U-Boot](#) `mkimage` tool during the U-Boot build process.

The following list is a recap the expected content of the MMC/SD card when using the Boundary Devices initialization script.

Filename	Description
<code>init.scr</code>	Compiled initialization script
<code>logo.bmp</code>	8-bit color splash image
<code>NK.nb0</code>	Windows CE image

## 5.2 Windows CE

As mentioned earlier, the Neon<sup>®</sup> board ships with a runnable Windows CE 5.0 image on MMC card. A [Board Support Package](#) is also available and necessary to tailor the operating system for a given application.

The following sections describe the process of producing an image matching the one shipped with the Neon<sup>®</sup> board.

### 5.2.1 Prerequisites and components

Most of the tools needed to create a bootable Windows CE 5<sup>®</sup> application for the Neon<sup>®</sup> board are provided by Microsoft. The following is a complete list of components and where they may be obtained.

Windows CE 5 <sup>®</sup>	<a href="#">Microsoft</a>
Embedded Visual C++ 4.0	<a href="#">Microsoft</a>
Embedded Visual C++ Service Pack	<a href="#">Microsoft</a>
Neon <sup>®</sup> Board Support Package	<a href="#">Boundary Devices</a>

### 5.2.2 BSP Installation

The Neon BSP is made available as a Windows installer file on the [Boundary Devices](#) website. This file defines a single BSP for the BD2003 and SM501-supporting variants. Installation consists of running the `.msi` file.

```
c:\> wget http://www.boundarydevices.com/bspNeon320x240.msi
c:\> .\bspNeon320x240.msi
```

As a reference tool for the content of the BSP, you should consider using [MSI2XML](#) to view the content.

### 5.2.3 Building the demo

The [Platform Builder project](#) used to construct our sample image may be found on the [Boundary Devices](#) web site.

After installation of the BSP, this project may be copied to a new directory within the WINCE500 PBWorkspaces directory and built using Platform Builder.

```
C:\WINCE500\PBWorkspaces>md bdWeb
C:\WINCE500\PBWorkspaces>cd bdWeb
C:\WINCE500\PBWorkspaces\bdWeb>wget http://boundarydevices.com/bdWeb.pbxml
--17:37:40-- http://boundarydevices.com/bdWeb.pbxml
=> 'bdWeb.pbxml'
Resolving boundarydevices.com... 66.113.228.134
Connecting to boundarydevices.com[66.113.228.134]:80... connected.
HTTP request sent, awaiting response... 200 OK
Length: 45,478 [text/plain]
100%[=====] 45,478 58.90K/s
17:37:40 (58.90 KB/s) - 'bdWeb.pbxml' saved [45478/45478]

C:\WINCE500\PBWorkspaces\bdWeb>. \bdWeb.pbxml
C:\WINCE500\PBWorkspaces\bdWeb>
```

After this is done, you should be able to build the sample WinCE platform through the Build OS|Sysgen and Build OS|Build and Sysgen Current BSP menu options.

## 5.3 Linux Support

The Linux Environment for Boundary Devices boards consists of three primary pieces, a toolchain, the kernel and device drivers, and a set of libraries and applications.

In order to allow configuration of each, a modified version of the [PTXdist](#) tool is used to configure and build each.

### 5.3.1 Toolchain

Before the kernel and applications can be built, it is first necessary to have a cross-compiler toolchain. The following [package](#) contains a build script for building a GCC-2.95.3 toolchain under Linux.

The following is a short list of the usage steps.

You will be prompted for two paths during the build process: the archive directory and the installation directory. The archive path is used to store the source tar-balls for the compiler, binutils, and glibc. Keeping this separate from the xchain directory allows you to re-build the toolchain without downloading the source packages again.

```
$ wget http://boundarydevices.com/xchain.tar.gz
$ tar zxvf xchain.tar.gz
$ cd xchain
$ make all
```

Note that building the toolchain (especially glibc) takes forever (on the order of a couple of hours), so after you've supplied the directory information, find something fun to do for a while!

We typically use `/armArchives` for the archive path and `/usr/local/arm` for the installation path.

After the build of your toolchain is complete, you'll want to add `$INSTALLPATH/bin` to your `.bashrc` or equivalent.

```
export PATH=\$PATH:/usr/local/arm/bin
```

### 5.3.2 Crosstool Linux Toolchain

Things have changed substantially in Cross Compiler land since we made the decision to create a set of build scripts for a cross compiler.

Thanks to the efforts of [Dan Kegel](#), things are now much simpler.

The following examples show how we at Boundary Devices set up our toolchains. Please refer to the [crosstool](http://crosstool.org) site for more complete instructions.

First, you'll need to download and unpack crosstool;

```
$ wget http://kegel.com/crosstool/crosstool-0.37.tar.gz
$ tar zxvf crosstool-0.37.tar.gz
```

As described in the crosstool [Quick Start](#) guide, the next step is to choose a starting point with one of the demo build scripts. We're currently using `demo-arm-xscale.sh` with the following settings (GCC 3.4.3 with Glibc version 2.3.5):

```
TARBALLS_DIR=/armArchives
RESULT_TOP=/opt/crosstool
eval 'cat arm-xscale.dat gcc-3.4.3-glibc-2.3.5.dat' sh all.sh --notest
```

We also build the compiler to use software floating point in user space, rather than hardware floating point (which traps to the kernel). To do this, modify `arm-xscale.dat` and add the `--with-soft-float` and `--without-fp` flags as shown below.

```
GCC_EXTRA_CONFIG="--with-cpu=xscale --enable-cxx-flags=-mcpu=xscale --with-float=soft"
GLIBC_EXTRA_CONFIG="--without-fp"
```

Note that this will take a **loong** time<sup>2</sup>. Find something else to do while you wait.

When complete, you should find a whole slew of programs in your `/opt/crosstool/gcc-3.4.3-glibc-2.3.5/arm-xscale-linux-gnu/bin/` directory:

```
-rwxr-xr-x 1 username cvsd 1900724 Jul 18 20:48 arm-xscale-linux-gnu-addr2line
-rwxr-xr-x 2 username cvsd 1960214 Jul 18 20:48 arm-xscale-linux-gnu-ar
-rwxr-xr-x 2 username cvsd 3339533 Jul 18 20:48 arm-xscale-linux-gnu-as
-rwxr-xr-x 2 username cvsd 331791 Jul 18 21:35 arm-xscale-linux-gnu-c++
-rwxr-xr-x 1 username cvsd 1855723 Jul 18 20:48 arm-xscale-linux-gnu-c++filt
-rwxr-xr-x 1 username cvsd 331290 Jul 18 21:35 arm-xscale-linux-gnu-cpp
-rwxr-xr-x 2 username cvsd 331791 Jul 18 21:35 arm-xscale-linux-gnu-g++
-rwxr-xr-x 2 username cvsd 330887 Jul 18 21:35 arm-xscale-linux-gnu-gcc
-rwxr-xr-x 2 username cvsd 330887 Jul 18 21:35 arm-xscale-linux-gnu-gcc-3.4.3
-rwxr-xr-x 1 username cvsd 16265 Jul 18 21:35 arm-xscale-linux-gnu-gccbug
-rwxr-xr-x 1 username cvsd 102084 Jul 18 21:35 arm-xscale-linux-gnu-gcov
-rwxr-xr-x 1 username cvsd 2373278 Jul 18 20:48 arm-xscale-linux-gnu-gprof
-rwxr-xr-x 2 username cvsd 2622683 Jul 18 20:48 arm-xscale-linux-gnu-ld
-rwxr-xr-x 2 username cvsd 1937609 Jul 18 20:48 arm-xscale-linux-gnu-nm
-rwxr-xr-x 1 username cvsd 2454999 Jul 18 20:48 arm-xscale-linux-gnu-objcopy
-rwxr-xr-x 1 username cvsd 2595563 Jul 18 20:48 arm-xscale-linux-gnu-objdump
-rwxr-xr-x 2 username cvsd 1960209 Jul 18 20:48 arm-xscale-linux-gnu-ranlib
-rwxr-xr-x 1 username cvsd 429743 Jul 18 20:48 arm-xscale-linux-gnu-readelf
-rwxr-xr-x 1 username cvsd 1806673 Jul 18 20:48 arm-xscale-linux-gnu-size
-rwxr-xr-x 1 username cvsd 1780595 Jul 18 20:48 arm-xscale-linux-gnu-strings
-rwxr-xr-x 2 username cvsd 2454994 Jul 18 20:48 arm-xscale-linux-gnu-strip
-rwxr-xr-x 1 username cvsd 14395 Jul 18 21:47 fix-embedded-paths
```

If you knew how difficult this used to be, you would agree: **Crosstool Rocks!**

<sup>2</sup>1 hr, 15 minutes on a 1GHz Athlon w/512MB of RAM

### 5.3.3 Crosstool Embedded ([Das U-Boot](#)) Toolchain

The instructions above can be followed to create a toolchain suitable for cross-compiling Arm-Linux programs on a host machine. The needs for building the boot loader are a bit different, though. In particular, the 'glibc' reference above refers very specifically to userspace "C" and "C++" libraries that defer much of their I/O to the Linux kernel itself through the use of system calls.

Under [Das U-Boot](#), no such system calls exist. In order to support this, we need to build a Cross-compiler with a different set of switches. Thankfully, the current [crosstool](#) distribution supports that as well through the use of a small library known as newlib from [Red Hat](#).

The next couple of steps will do just that.

First of all, create a file named `crosstool-0.37/contrib/newlib/arm-elf-newlib-1.12.0.dat` and paste the following content into it.

```
TARGET=arm-elf
TARGET_CFLAGS="-O2"
BINUTILS_DIR=binutils-2.14
BINUTILS_URL=ftp://ftp.gnu.org/pub/gnu/binutils
NEWLIB_DIR=newlib-1.12.0
NEWLIB_URL=ftp://sources.redhat.com/pub/newlib
GCC_DIR=gcc-3.4.3
GCC_EXTRA_CONFIG=
```

Then, create a shell script named `crosstool-0.37/contrib/newlib/arm-elf.sh` with the following content.

```
#!/bin/sh
set -ex
TARBALLS_DIR=/armArchives
RESULT_TOP=/opt/crosstool
export TARBALLS_DIR RESULT_TOP
GCC_LANGUAGES="c,c++"
export GCC_LANGUAGES

# Really, you should do the mkdir before running this,
# and chown /opt/crosstool to yourself so you don't need to run as root.
mkdir -p $RESULT_TOP

# Build the toolchain. Takes a couple hours and a couple gigabytes.

eval `cat arm-elf-newlib-1.12.0.dat` sh all-newlib.sh --notest
```

```
echo Done.
```

Next, edit the `contrib/newlib/getandpatch-newlib.sh` file and replace the line that says:

```
getUnpackAndPatch ftp://ftp.gnu.org/pub/gnu/gcc/$GCC_DIR.tar.gz ;;
```

with the following

```
getUnpackAndPatch ftp://ftp.gnu.org/pub/gnu/gcc/$GCC_DIR.tar.bz2 ;;
```

Then, run the script like so.

```
[frame=single]
$ time sh demo-arm-xscale.sh
```

#### 5.3.4 [GNUARM](#) binaries

The [GNUARM](#) site also has binaries for Linux-X86, though we haven't used them.

#### 5.3.5 Kernel

<a href="#">Arm-Linux kernel version 2.4.19</a>	Linux kernel patches for ARM processors
<a href="#">PXA Patches</a>	Intel PXA support for ARM-Linux
<a href="#">Boundary Devices patches</a>	Boundary Devices support

#### 5.3.6 Libraries and Applications

Place links and references as in [this page](#) here.

## 6 Development Tools

### 6.1 minidebug

`minidebug` is a small (under 16k) debugger designed to fit completely within the instruction cache on the PXA-255 processor to allow testing of boards even in the absence of ROM or RAM.

It also includes features to download over either serial or Ethernet, allows the display and manipulation of registers and memory, and supports controlled execution through breakpoints and data watchpoints.

Upon entry, `minidebug` generally displays a dot (.) prompt, sometimes pre-pended by a string that looks like `$$00#b3`. Fear not. The `$$00#b3` string is used to allow `minidebug` to work in conjunction with the `gdb` debugger on the attached system.

The following is a list of commands that can be issued at the dot prompt. Note that this list can also be retrieved through `minidebug` by entering a question mark (?).

command	params	description
<b>BC</b>	address	Breakpoint clear
<b>BE</b>	address	Breakpoint examine
<b>BS</b>	address	Breakpoint Set
<b>BURN</b>	address range	Burn image at address range to flash
<b>E</b>	address	Examine and modify memory
<b>D</b>	address value	Deposit
<b>DL</b>	address	Start XModem for serial download
<b>DLW</b>	address	Download wireless
<b>G</b>	address	Go
<b>GL</b>		Go Linux
<b>GG</b>	address	Go no cache clear
<b>R</b>		Display content of registers
<b>SSID</b>		Set Wireless SSID string
<b>T</b>		Trace
<b>TT</b>		Trace no cache clear
<b>V</b>	address range	Verify content of flash
<b>WC</b>	address	Watch clear
<b>WR</b>	address	Watch read
<b>WRW</b>	address	Watch read/write
<b>WW</b>	address	Watch write
<b>?</b>		Show this list of commands

### 6.1.1 mdebug

The mdebug image adds Ethernet and wireless download capabilities using the Blast protocol to the Neon®. The SSID and DLW commands above are only valid when mdebug is present.

The following is an example of the use of mdebug and DLW. Note that the first commands used download mdebug to address A1C00000 and run it from there. Also note that the use of DLW requires a DHCP or BOOTP server for IP address assignment.

```

----- DLW example -----
. dl a1c00000
CCCCCCCCC
enter binary file name: mdebug
CCCCCCCCCCCCCCCCCCCCCCCCCCCCCCCCCCCC.....
.....
73620 bytes, 72 packets, 0 retrys
OK A1C00000-A1C12000
. g a1c00000
$S00#b3
Reset A0008000
R0: 00000000 R1: 0000014C R2: 00000001 R3: 00000060
R4: A1F1D540 R5: A1F22B1C R6: A1E9BECC R7: 00000002
R8: A1E9BFDC R9: A1E9BE88 SL: 00000000 FP: A1E9BE10
IP: A1E9BE14 SP: A0003400 LR: A0008000 PC: A0008000
CPSR 600000D3 FPO: 0000000000
.
. dlw a0008000
Boundary Devices 1
SMC91C11xFD
%s: PHY=LAN83C183 (LAN91C111 Internal)
%s: PHY remote fault detected
%s: Ethernet Link Detected
%s: PHY 100BaseT
%s: PHY Half Duplex
valid mac address
00:50:C2:06:30:8F
.....DISC:received 0x012C bytes of reply
done
REQ:received 0x012C bytes of reply
done
router at 192.168.0.1
DNS server at 68.2.16.25
DNS server at 68.2.16.30
DNS server at 68.6.16.30
DHCP success, using IP 192.168.0.14
ready to receive file

enter binary file name: cramfs.img
.....
.....
transmitted in 52 seconds
.[eof]
lost 0x00000000 packets
[.eof] in 52 seconds
sent 19783680 bytes of file to 192.168.0.14
Error free!!!

0x012DE000 bytes written to buffer at A0008000 A12E6000

```

## 6.2 JTAG system-level debugger

The jtag executable provided by Boundary Devices is based on the one provided by the [Open WinCE](#) project.

Our main goals in developing the jtag program were to aid in hardware debugging and to allow the first flash EEPROM image to be burned onto

a new device. That said, we also use it extensively as a terminal emulator during development and have added a number of extensions for that purpose.

The current release supports the PXA250, PXA255, and SA1100 (lart untested). It checks the IDCODE register and uses the appropriate BSDL structure.

### 6.2.1 Requirements

The `jtag` executable runs either under Linux or Cygwin.

Under Linux, there are no known dependencies except for `libc` and `libc++`.

Under Cygwin, the `jtag` executable requires the [ioperm](#) driver to be installed. This driver makes the `ioperm()` and `iopl()` system calls available under Windows for access to the serial and parallel ports. Note that after the cygwin package is installed, you still need to enable the driver through the use of the `ioperm` executable

For the `cmd.exe` inclined:

```
c:\> c:\cygwin\bin\ioperm.exe -v -i
```

or for the `bash`-inclined:

```
user@machine ~/u-boot-1.1.2
$ /bin/ioperm.exe -iv
```

Either way, the output should be something like the following.

```
Installing ioperm.sys...
OpenSCManager      ok
CreateService      ok
OpenService        ok
StartService       ok
ioperm.sys is already running.
```

### 6.2.2 Startup Options

`jtag -t` Generate a square wave on the processor pins.

This option allows pins to be checked in a sequence defined by the hardware file. A '+' or '-' keypress will scroll forward or backward through the list. Also, pin name can be entered directly. Entering GP0 will generate a square wave on GP0. A '?' will list matching pin names. Entering GP? will list all gpio pins.

`jtag -i` Identify the flash part used

This option tries to identify the part number of the Flash EEPROM. Currently supported parts are 28F160F3B, 28F320J3A, 28F128J3A, 28F320C3B, and 28F320S3, though not all have been tested. It should be relatively easy to add new parts.

`jtag -f` Generate the appropriate signals to program a flash.

This option is rarely used, since we normally program the flash through the minidebug software.

`jtag -c` Download code to the mini and main instruction cache.

This option is used to load a file into the instruction cache. Usually `-x`, `-e`, or `-d` option is used to load minidebug. The `-d` option just loads minidebug. The `-x` option then proceed to dowload a file over the serial port using xmodem. The `-e` option dowloads a file using ethernet (wireless and wired support.) The `-ssid` option can be used to specify a wireless essid value to pass to minidebug.

`jtag -s` Terminal emulator option.

The parallel port is still searched because `[Ctrl A] B` can be used to send a JTAG break and attempt to return control to minidebug.

`jtag -N` Burn the entire flash.

This option can be used to burn a flash for the first time. It first downloads the file `mdebug` to ram address `A1800000`. Then it executes an ethernet download of the file `totalflash`. If successful, it then burns the flash using the minidebug(`mdebug`) command `BALL` (burn all).

### 6.2.3 Control Keys

Once running, the jtag program responds to a number of command sequences, all beginning with [Ctrl A] .

[Ctrl A] B	Send a break
[Ctrl A] S	Send a file using XModem
[Ctrl A] L	Toggle logging to jtag.log
[Ctrl A] T	Send an ascii file
[Ctrl A] P	Choose baud rate
[Ctrl A] Q	Quit
[Ctrl A] R	Hardware reset

### 6.2.4 Blast protocol

When used with the mdebug image, the jtag program recognizes the start-of-download request sent by the device, and will prompt the user for a file name to send. Refer to the example in the mdebug section for details.

### 6.2.5 Quick-start download and burn

If you have a minidebug for your platform in the current working directory, the following sequence shows the process of using it to download and burn a new u-boot image.

#### Start debugger.

```

$ cd ..
$ ./jtag -d
ioport 3bc wrote 5d read ff
using printer port at 378

IDCODE: 69264013 - 0110 1001001001100100 00000001001 1
Halt released
Waiting for stub
LDIC finished

This uses the program minidebug on the arm to download to ram
using the serial port(xmodem protocol) or blast the file using
ethernet
^A Q for quit, ^A B external break, ^A S for sending a file with xmodem,
^A I for sending an RGB bitmap with xmodem, ^A P baudrate
^A T to send an ascii file

DBG-Vector Trap A0008000
R0: 00000000 R1: 0000014C R2: 00000000 R3: 00000003
R4: 0000001E R5: 81A0F288 R6: AAA00010 R7: 00BD784
R8: 00000000 R9: 81A18774 SL: AAA0001C FP: 81A1606C
IP: 80039094 SP: A0003400 LR: 8006C8CC PC: A0008000
CPSR 600000D3 FPO: 0000000000
.
```

To download using serial, use the 'dl address' command. Hit [Ctrl A] S to send the file (assumes u-boot.bin in the current directory). After issuing the DL command, the minidebug will begin sending C's. These are the start commands for XModem, and signal the readiness

to receive a file. Use the [Ctrl A] S sequence to instruct jtag to prompt for and send a file using XModem.

To abort the operation, either when prompting for a filename or before, use [ctrl-C].

```
. dl a1f00000
CCCCCCCCCCCCC
enter binary file name: u-boot.bin
CCCCCCCCCCCCC.....
.....
81292 bytes, 80 packets, 0 retrys
OK A1F00000-A1F14000
```

To burn a range of data from RAM to the start of flash, use the 'burn' command like this. Note that the end address was given above at the end of the DL response.

```
. burn a1f00000 a1f14000

Sector 04000000 Erasing Programming Verifying...
Success
```

### 6.3 TeraTerm blast extensions

As an alternative to the jtag executable, Boundary Devices has also produced an extension to the TeraTerm open-source terminal emulator with support for the Blast<sup>®</sup> protocol.

It has the following benefits over the use of jtag:

- Does not require Cygwin and ioperm
- Because it's a Windows<sup>®</sup> graphical application, it's a bit simpler to use and has a file-chooser dialog.

The drawback is that it does not support the jtag hardware connection or any of the associated features (can't force a hardware reset, can't recover a machine with a trashed flash).

We recommend its use only for non-development needs, or when cabling the jtag is inconvenient (e.g. during production).

It can be downloaded [here](#).

## 6.4 Using U-Boot Networking

One of the most useful features of the [Das U-Boot](#) loader is its' ability to transfer files across a network. As shown below, the `dhcp` command is typically used to perform both a BOOTP/DHCP request and transfer a file.

```

$
$ set bootfile nk4.nb0
$ set serverip 192.168.0.26
$ dhcp
Using MAC Address 00:50:C2:06:30:8F
BOOTP broadcast 1
DHCP client bound to address 192.168.0.14
TFTP from server 192.168.0.26; our IP address is 192.168.0.14
Filename 'nk4.nb0'.
Load address: 0xa0030000
Loading: T T #####
#####
#####
#####
#####
...
#####
#####
done
Bytes transferred = 23068672 (1600000 hex)
$

```

First of all, the `bootfile` environment variable is used in the example above to define the file to transfer. By default, the boot file is computed using a hex representation of the IP address assigned to the device.

```
'192.168.0.14'    => '0E00A8C0.img'
```

Used with a tftp server that allows symlinks, this provides a convenient way to define per-device boot files.

The second thing to note in the example is the use of the `serverip` environment variable. This variable defines the IP address of the TFTP server, in this case '192.168.0.26'. If your DHCP server allows setting of the `si_addr` field in the DHCP response (refer to RFC2131 for details), this value can be automatically provided.

The third thing of interest is the load address (0xa0030000). This value is defined in `neon.h` in the `CFG_LOAD_ADDR` macro. It may be overridden through the use of the `loadaddr` environment variable.

The `CONFIG_EXTRA_ENV_SETTINGS` macro in `configs/neon.h` may be used to assign the proper compile-time defaults for the environment variables listed above.

The DHCP/BOOTP/TFTP process is relatively fast, even using a slow protocol like TFTP. The 23MB transfer above took 20 seconds. Much faster than swapping MMC cards. Slower than `mdebug/jtag` under Linux, but faster than `Cygwin jtag` and `blast`.

Any server software that supports RFC1350 should work. The standard `tftpd` daemon under Linux is a good choice. Under Windows, the free [Tftpd32](#) by Philippe Jounin is a very nice tool.

## 7 Configuration Notes

### 7.1 Display configuration

The Neon<sup>®</sup> supports a variety of LCD panels. The following section describes the process of configuring the board for a known, currently supported display panel as well as a [Das U-Boot](#) utility command for testing settings on a new panel.

If you know the type of panel at compile time, you can place a selection from the list below in the [Das U-Boot](#) configuration file `include/configs/neon.h`. The `CONFIG_EXTRA_ENV_SETTINGS` macro is used to define a compile-time choice. If you are using EEPROM to store environment settings, these can be saved in the environment as well as described below.

Name	Resolution	Description
<b>qvga_portrait</b>	240 x 320	Hitachi Quarter VGA 3.5" panel
<b>hitachi_qvga</b>	320 x 240	Hitachi High-Brightness Quarter VGA
<b>sharp_qvga</b>	320 x 240	Sharp Quarter VGA
<b>hitachi_hvga</b>	640 x 240	Hitachi Half VGA
<b>sharp_vga</b>	640 x 480	Sharp 10.4 inch VGA
<b>hitachi_wvga</b>	800 x 480	Hitachi Half VGA
<b>crt1024x768</b>	1024 x 768	HP SVGA

For example:

```
#define CONFIG_EXTRA_ENV_SETTINGS "panel=hitachi_hvga" "\0"
```

Note that this is automatically done as a part of the `make neon_config` step.

The boot loader settings for the LCD panel will carry through to the Linux and Windows CE drivers.

If you're using the Neon<sup>®</sup> with a new panel, you'll need to determine and define the following fields for the panel.

field name	type	description
<b>name</b>	string	used to identify the panel
<b>pixclock</b>	number	Divisor for the pixel clock. Generally 3 for QVGA, 1 for higher resolution.
<b>xres</b>	number	Horizontal pixel count
<b>yres</b>	number	Vertical pixel count
<b>act_high</b>	number	Clock polarity, 0 (default) or 1
<b>hsync_len</b>	number	Horizontal sync pulse
<b>left_margin</b>	number	Idle pixels before leftmost pixel
<b>right_margin</b>	number	Idle pixels after rightmost pixel
<b>vsync_len</b>	number	Vertical sync pulse
<b>upper_margin</b>	number	Idle rows before topmost
<b>lower_margin</b>	number	Idle rows after bottom
<b>active</b>	number	Active Matrix (1) or Passive (0)
<b>crt</b>	number	digital LCD(0) or Analog CRT(1)
<b>rotation</b>	number	landscape(0) or portrait(90)

Once you have collected this information, a corresponding entry must be added to the list of panels.

```
u-boot-1.1.2/common/lcd_panels.c
```

To allow the testing of these settings and the use of a different display without re-compiling, the `lcdp` boot loader command is available. It may be used in one of the following ways:

command string	description
<b>lcdp</b>	Show the current lcd panel settings
<b>lcdp ?</b>	Show the list of currently supported lcd panels
<b>lcdp panelname</b>	Select and initialize panelname
<b>lcdp +</b>	Add a new panel (prompts for details)

Note that the boot loader text display will not be updated properly if the X and Y resolution don't match the current default display. Use the `bmp` commands to test the new panel configuration after using the `lcdp +` command string.

As always, the source code is available. The two modules used to support dynamic display selection are:

- `common/cmd_lcdpanels.c` - defines U-Boot commands
- `common/lcd_panels.c` - display initialization

### 7.1.1 What display is currently selected?

The `lcdp` command is used for a variety of purposes including querying the currently selected display.

```
$ lcdp
-----
name          : crt1024x768
pixclock      : 65000000
xres          : 1024
yres          : 768
act_high      : 1
hsync_len     : 200
left_margin   : 24
right_margin  : 161
vsync_len     : 6
upper_margin  : 3
lower_margin  : 29
active        : 0
```

### 7.1.2 What displays are supported...?

The `lcdp` command followed by a question mark will list the currently supported displays. As shown in the following example, the list is extensive (and extensible, as we'll show later).

```
$ lcdp ?
-----
name          : hitachi_qvga
pixclock      : 0
xres          : 320
yres          : 240
act_high      : 1
hsync_len     : 64
left_margin   : 1
right_margin  : 16
vsync_len     : 20
upper_margin  : 8
lower_margin  : 3
active        : 1
-----
name          : sharp_qvga
pixclock      : 0
xres          : 320
yres          : 240
act_high      : 1
hsync_len     : 8
left_margin   : 16
right_margin  : 1
```

```
vsync_len      : 20
upper_margin   : 17
lower_margin   : 3
active         : 1
-----
name           : hitachi_hvga
pixclock       : 1
xres           : 640
yres           : 240
act_high       : 1
hsync_len      : 64
left_margin    : 34
right_margin   : 1
vsync_len      : 20
upper_margin   : 8
lower_margin   : 3
active         : 1
-----
name           : sharp_vga
pixclock       : 1
xres           : 640
yres           : 480
act_high       : 1
hsync_len      : 64
left_margin    : 60
right_margin   : 60
vsync_len      : 20
upper_margin   : 34
lower_margin   : 3
active         : 1
-----
name           : hitachi_wvga
pixclock       : 1
xres           : 800
yres           : 480
act_high       : 0
hsync_len      : 64
left_margin    : 1
right_margin   : 39
vsync_len      : 20
upper_margin   : 8
lower_margin   : 3
active         : 1
-----
```

```
name          : crt1024x768
pixclock      : 65000000
xres          : 1024
yres          : 768
act_high      : 1
hsync_len     : 200
left_margin   : 24
right_margin  : 161
vsync_len     : 6
upper_margin  : 3
lower_margin  : 29
active        : 0
$
```

### 7.1.3 Select a supported display

If you supply a supported panel name on the `lcdp` command line, the display controller will be reset with the associated parameters.

```
$ lcdp hitachi_wvga
found panel hitachi_wvga
panel: 800x480x8
$ lcdp
-----
name          : hitachi_wvga
pixclock      : 1
xres          : 800
yres          : 480
act_high      : 1
hsync_len     : 64
left_margin   : 1
right_margin  : 39
vsync_len     : 20
upper_margin  : 8
lower_margin  : 3
active        : 1
```

The selection takes place immediately, so if you have a panel connected, you should see valid output on the display.

Note that if you change resolutions, the display memory will likely have mis-aligned data in it. Displaying a bitmap on the display through the use of the `fatload` and `bmp` commands will remedy this situation. Refer to `init.script` for an example.

If you want to make your selection stick through a reset, you can save it through the `set` and `save` U-Boot commands.

```
$ set panel hitachi_wvga
$ save
Saving Environment to Flash...
Un-Protected 1 sectors
Erasing Flash...
Erased 1 sectors
Writing to Flash... done
Protected 1 sectors
$ reset
resetting ...

$$S00#b3
Reset A0008000

U-Boot 1.1.2 (Jun 10 2005 - 22:31:50)

U-Boot code: A1F00000 -> A1F20500 BSS: -> A1F54520
RAM Configuration:
Bank #0: a0000000 64 MB
Flash: 32 MB
panel hitachi_wvga found: 800 x 480
...
```

#### 7.1.4 Define and test a new display

If you add a plus sign to the `lcdp` command line, you'll be prompted for all of the parameters needed to define a display.

```
$ lcdp +
name: myDisplay
pixclock: 65000000
xres: 800
yres: 600
act_high: 1
hsync_len: 200
left_margin: 24
right_margin: 161
vsync_len: 6
upper_margin: 4
lower_margin: 29
active (0|1) : 1
-----
name           : myDisplay
```

```
pixclock      : 1694498816
xres          : 800
yres          : 600
act_high      : 1
hsync_len     : 200
left_margin   : 24
right_margin  : 161
vsync_len     : 6
upper_margin  : 4
lower_margin  : 29
active        : 1
```

As with switching to a known panel, the settings take effect immediately upon completion of the command. This can be a very quick way to add support for a new display before committing it to the supported list.

Adding an entry into the `lcd_panels_` array in `common/lcd_panels.c` will provide boot-time support.

### 7.1.5 Saving settings to Flash EEPROM

All of the descriptions above are useful, but don't address the issue of persistence. That is performed through the use of the 'panel' environment variable and the 'saveenv' [Das U-Boot](#) command.

The following example shows the process.

```
$ set panel crt1024x768
$ save
Saving Environment to Flash...
Un-Protected 1 sectors
Erasing Flash...
Erased 1 sectors
Writing to Flash... done
Protected 1 sectors
```

## 7.2 Memory size configuration

The Neon<sup>®</sup> supports either 32 or 64MB of RAM.

Most of the default boot loader configuration assumes at least 32MB of RAM is available. In particular, the `TEXT_BASE` variable in `board/neon/config.mk` links the `uboot.bin` image at 31MB from the start of RAM.

Use the `PHYS_SDRAM_1_SIZE` variable in `include/configs/neon.h` to specify the actual size for your hardware.

The Windows CE image supports either, but defaults to 32MB. Set the `RAM_SIZE_64_MB` environment variable in your project to indicate that 64MB should be present.

The RAM size set in the boot loader is passed to the Linux kernel.

### 7.3 Upgrading U-Boot

As you might expect, [Das U-Boot](#) is stored at offset zero in flash EEPROM (i.e. at address zero). If you have a new [Das U-Boot](#) image (typically `u-boot.bin`) on an SD/MMC card, you can upgrade it by first unprotecting and erasing the first sector of flash, then copying the new image to address zero as shown below.

```
$ mmcinit
...
registering device

$ fatload mmc 0 a0008000 u-boot-neon.bin
reading u-boot-neon.bin
134264 bytes read in 271921 ticks, (73 ms),
adler == 0xf0cde398 in 24546 ticks, (6 ms)

$ protect off all
Un-Protect Flash Bank # 1

$ erase 0 3fff
Erased 1 sectors

$ cp.b a0008000 0 $filesize
Copy to Flash... done

$ cmp.b a0008000 0 $filesize
Total of 134264 bytes were the same

$ reset
```

After reset, you should see the new build date in the U-Boot banner.

## 7.4 Touch Panel Calibration

Under Linux, the flash sector at address 0x140000 is used to store the touch-screen calibration settings. If you're using **bdScript** startup code, the calibration routine will launch upon first boot if not defined.

Under Windows CE, the touch screen settings are stored on the MMC card in a file named **touch.txt**. You'll need to use the mouse to launch the touch calibration program.

## 7.5 Ethernet MAC Addresses

Normally, Neon boards come with their MAC addresses pre-programmed during assembly and test. This is done by using the U-Boot `mac` command as shown below.

Invoked without an argument, the command will display the current MAC address. Used with a single parameter (MAC address with colons separating each pair of hex digits), the command will allow (re)programming of the MAC address.

```
$ mac
mac address ff:ff:ff:ff:ff:ff

$ mac 00:50:c2:06:30:b8
setting mac address to 00:50:c2:06:30:b8
done
```