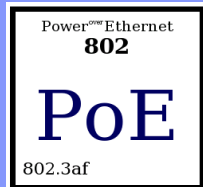


# boundary devices



*The elements of your next design.*

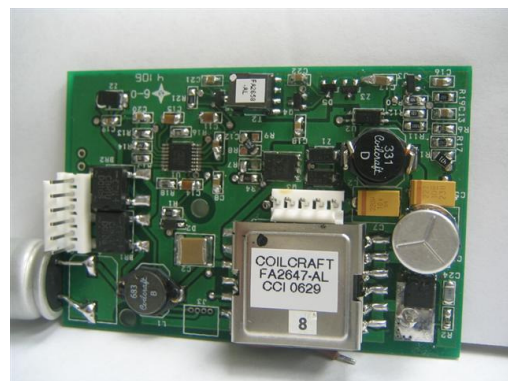
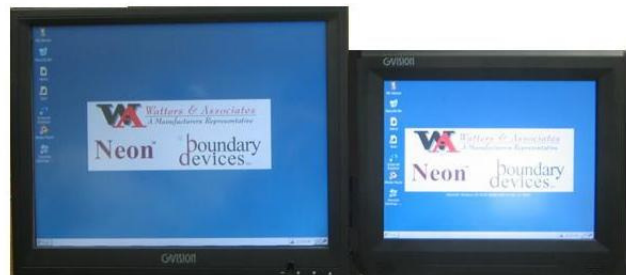
## Power over Ethernet

Power over Ethernet (PoE) is a revolutionary technology that provides a wide variety of advantages over traditional AC outlet power. PoE allows power to be supplied through the same Cat 5 cable that currently carries Ethernet data. PoE reduces the need for electricians to install conduit, electrical wiring, and outlets throughout the facility. In larger installations, these items can be relatively expensive thus PoE would provide a tremendous monetary savings. Besides the monetary savings, PoE allows flexible placement of systems. System location is no longer bound by the locations of AC outlets.

In order to take advantage of the benefits of PoE, Boundary Devices has developed a pluggable PoE module. The PoE module is a 802.3af-compliant Power over Ethernet module that has been designed specifically to provide other Boundary Devices products with PoE capability. With PoE, the Boundary Devices lineup of boards can be used anywhere an Ethernet connection exists, an AC outlet is no longer necessary. By simply adding a PoE module to the Neon<sup>270</sup> board, the device is immediately transformed into a very powerful PoE solution.

Boundary Devices offers two complete PoE solutions in two very convenient form factors. As seen in the picture, a 15" and a 10.4" solution are available. Both displays have touch screen support and are driven by Neon<sup>270</sup> with a pluggable PoE module. The 10.4" solution consumes less than 12 watts and is 802.3af-compliant. Non-PoE versions are also available. Both solutions support Windows CE as well as Linux operating systems.

For additional information on PoE solutions and all other Boundary Devices products, please contact Watters & Associates.



Patent Pending



Represented by:  
**Watters & Associates**  
A Manufacturer Representative  
5030 S. Mill Ave., Suite C5, Tempe, AZ 85282  
(480) 222-4900 Fax (480) 222-4904  
www.wattersinc.com